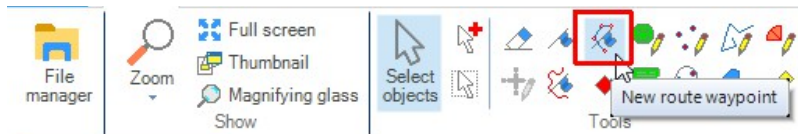


Creating a route and a route card

21/11/2021

In the following example part of a track from Laragh to Scarr is shown in blue and a route is created using this as a guide. A route can, of course, also be created from scratch without using a track .

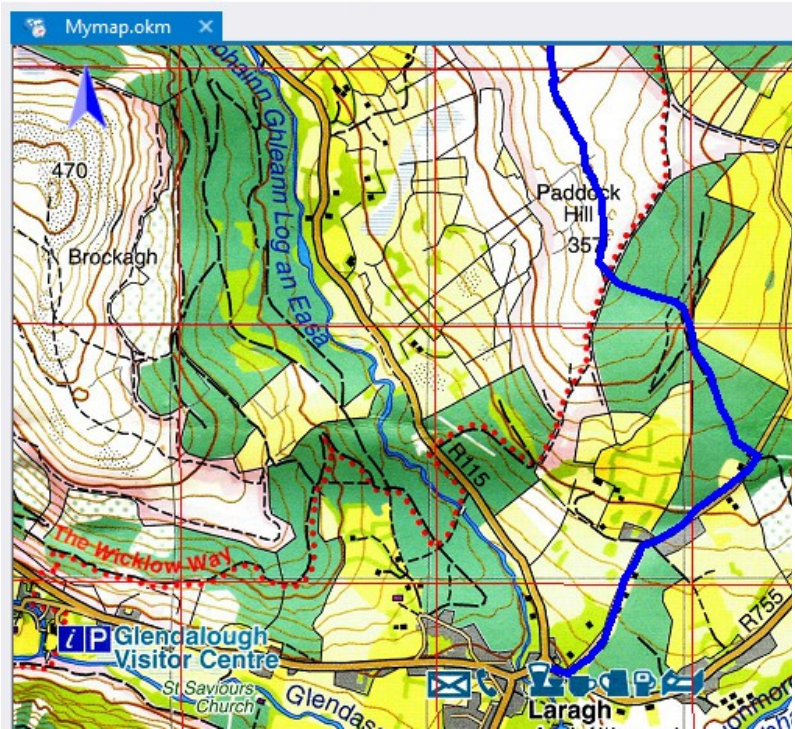
In the Home tab click on the **New route waypoint** icon



The cursor changes to a cross-hairs.

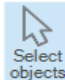
Moving it to a point and clicking creates the first route waypoint.

It is shown as a red flag and there are two 1's marked.

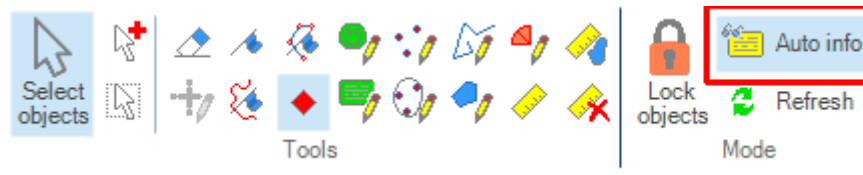


The **red 1** is the name of the **route** being created

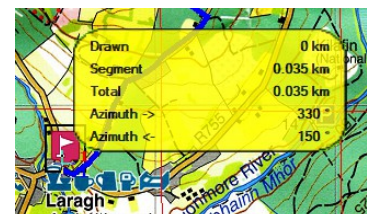
The **blue 1** is the name of the **route waypoint**

Pressing **Alt-S** or clicking on  will change the cursor back to a select arrow.


Note:



If the **Auto info** icon has been selected then as you move the mouse-pointer around it will display beside it some information about the distance and bearing of its current position from the previous point.

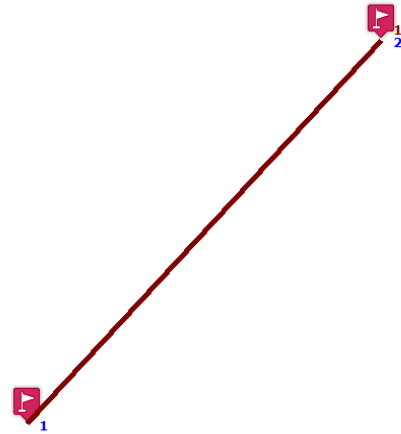


In this case pressing **Alt-S** has no effect so you will have to

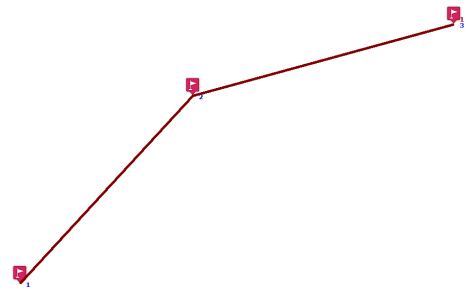
either use 

or **de-select Auto info**

Clicking on another point creates a second route waypoint joined by a red line to the first. The **blue** numerals are the names of the **route waypoints**, the single **red** numeral is the name of the **route**



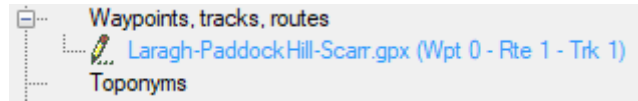
Clicking again continues the process.



In this way, as shown, a route has been created for part of the walk from Laragh to Paddock Hill.



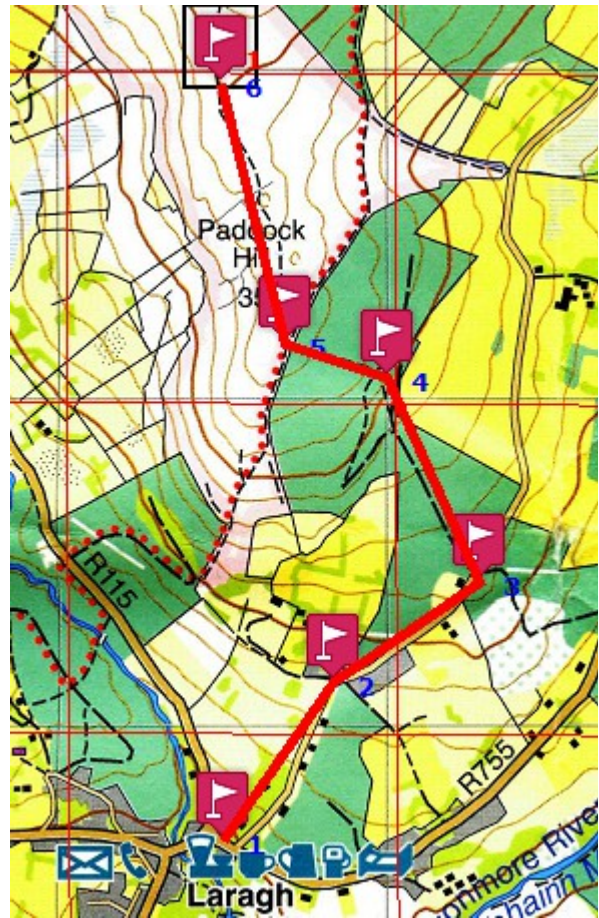
Going to File manager you can see that the GPX file called **Laragh - PaddockHill-Scarr.gpx** now contains one route and one track



To delete the track leaving just the route right click on the GPX file in File manager and choose **List tracks**

Click on the leftmost column [underneath the i symbol] highlight the row containing the track [in the upper half of the window] and press the **Delete** key on your computer.

Click on **Apply** and then **OK**

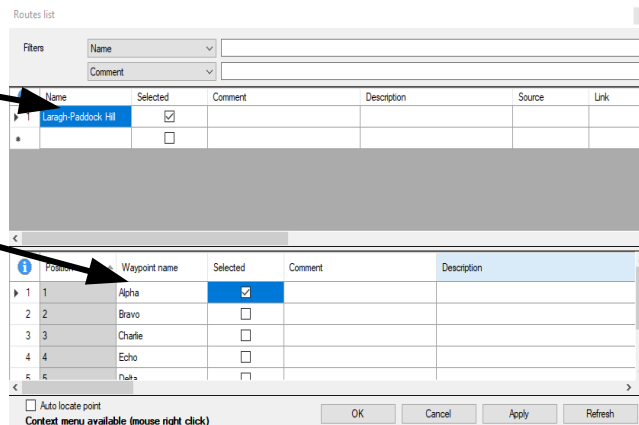


You will want to change the name of the route and may prefer to change the names of the route waypoints [single digit numerals can be difficult to distinguish on the small screen of a GPS device in adverse weather conditions]

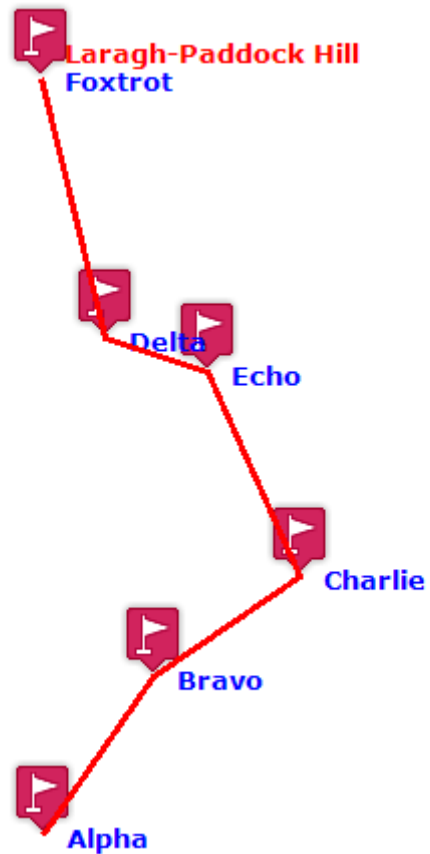
Right click on the GPX file in File manager and choose **List routes**

Route name

Route waypoint names



Make whatever changes you want and then click on **Apply** followed by **OK**

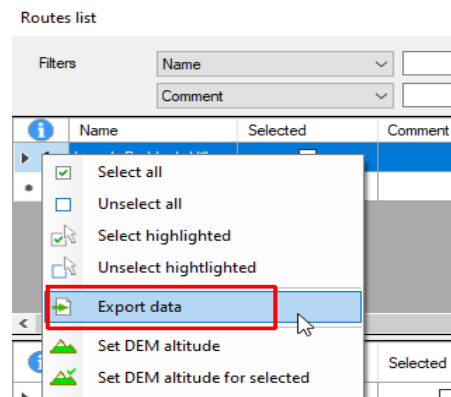


Now **Save** the file by right clicking on the GPX file in File manager and choosing

Making a route card

You can make a route card by first exporting the data to a .csv file which can then be edited and printed using a spreadsheet e.g Excel, OpenOffice Calc.

In the **Routes list** window right click on the route and select **Export data**



The resulting .csv file when opened in OpenOffice Calc looks like:

Point number	Name	Comment	Description	Source	Link	Symbol	Type	Coordinates 1	Coordinates 2	Distance from previous (km)	Distance from start (km)	Azimuth
1	Alpha						T	14400 96706	UTM 29N East: 681.448 m North: 5.876.679 m	0	0	
2	Bravo						T	14738 97187	UTM 29N East: 681.779 m North: 5.877.165 m	0.588	0.588	0.588
3	Charlie						T	15184 97493	UTM 29N East: 682.221 m North: 5.877.477 m	0.541	1.129	1.129
4	Echo						T	14907 98109	UTM 29N East: 681.935 m North: 5.878.089 m	0.675	1.804	1.804
5	Delta						T	14596 98210	UTM 29N East: 681.623 m North: 5.878.185 m	0.326	2.13	2.13
6	Foxtrot						T	14405 98996	UTM 29N East: 681.421 m North: 5.878.968 m	0.809	2.939	2.939

When this has been edited to delete unwanted columns, centre data centred in the columns, replace the word “Azimuth” with “Bearing” and so on the result is:

	A	B	C	D	E	F
1	Laragh-Paddock Hill					
2	Point number	Name	Coordinates	Distance from previous (km)	Distance from start (km)	Bearing from previous (°)
3	1	Alpha	T 14400 96706	0	0	0
4	2	Bravo	T 14738 97187	0.588	0.588	36
5	3	Charlie	T 15184 97493	0.541	1.129	57
6	4	Echo	T 14907 98109	0.675	1.804	337
7	5	Delta	T 14596 98210	0.326	2.13	289
8	6	Foxtrot	T 14405 98996	0.809	2.939	348
9						

This can then be printed out.

If you prefer it with “Distance to next” and “Bearing to next” instead of “from previous” then:

Highlight all rows in the column except the first

Distance from previous (km)
0
0.588
0.541
0.675
0.326
0.809

Press Ctrl-X to delete

Distance from previous (km)
0

Highlight all rows in the column except the last

Distance from previous (km)
0

Press Ctrl-V to paste and change the name

Distance to next (km)
0.588
0.541
0.675
0.326
0.809

Do the same for the Bearings column.

The result will look like this:

	A	B	C	D	E	F
1	Laragh-Paddock Hill					
2	Point number	Name	Coordinates	Distance to next (km)	Distance from start (km)	Bearing to next (°)
3	1	Alpha	T 14400 96706	0.588	0	36
4	2	Bravo	T 14738 97187	0.541	0.588	57
5	3	Charlie	T 15184 97493	0.675	1.129	337
6	4	Echo	T 14907 98109	0.326	1.804	289
7	5	Delta	T 14596 98210	0.809	2.13	348
8	6	Foxtrot	T 14405 98996		2.939	
9						