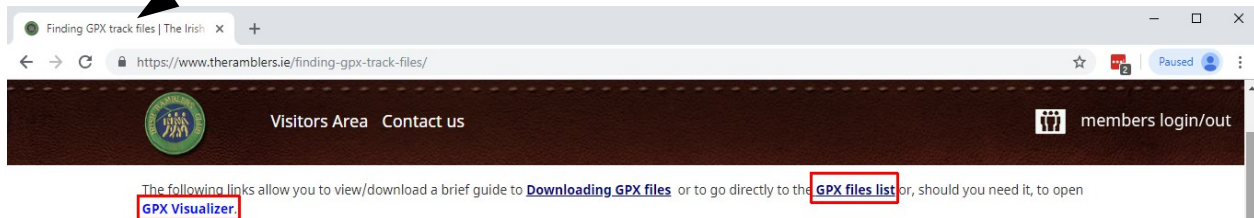


A quick demo

22/02/16

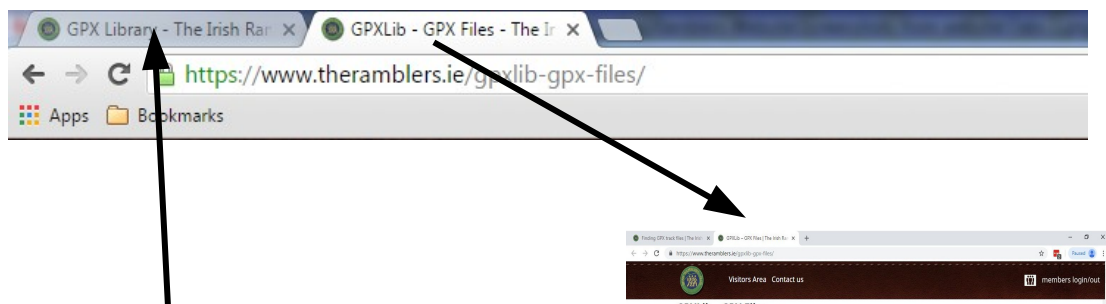
The following note includes screenshots taken using Chrome. If you use Safari or Firefox you will get something very similar.

Initially only the tab for the GPX Library is open.



On the GPX Library Home Page there are two links: [GPX files list](#) and [GPSVisualizer](#)

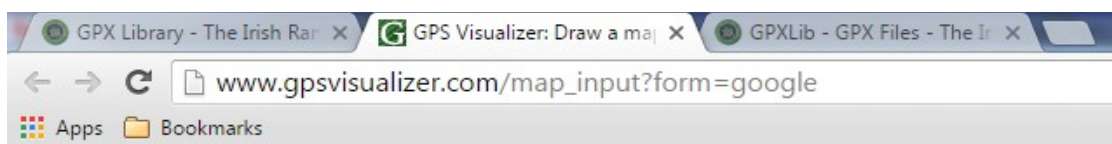
Click on [GPX files list](#) and you will see that a new tab has been opened.



Return to the GPX Library Home Page by clicking in the middle of its tab. [Be careful not to close the tab by clicking on the **x** at the right end.]

Now click on [GPSVisualizer](#) and you will then have three tabs


You can move from one to another by clicking in the middle of a tab.



Click on the **GPXLib - GPX Files** tab:

GPXLib – GPX Files

Grade: Area: Description:

Hikes dating from to To download a track **Right Click** on  and choose **Save Link As ...**

Date	Area	Grade	Description
2014-02-09	Glencree	3	Glencree Centre (O 142 178) - Up L. Bray - Eagle's Crag - Kippure - Turfcutter Rd - Lr L. Bray - Glencree
2014-04-27	Pier_Gates	3	Djouce Wood CP (O 213 131) Paddock Pond - WW - Glasnamullen - Paddock
2014-06-29	Glendalough	3	Visitor Centre (T 126 969) - Derrybawn - Derrybawn Ridge - Mullacor - Spinc - forest tracks
2014-07-20	Glenmacnass	3	Glenmacnass (O 114 030) - Brown Mtn - Scarr - Oldbridge - Loch Dan - Inchavore River - tracks
2014-08-17	Enniskerry	3	Crone CP (O 192 142) - Tonduffs - Maulin - WW
2014-08-31	Glenmalure	3	Baravore CP (T 066 942) - Fraughen Rock Glen - Cannon - Lug - Cloghernagh - Arts Lough - zig-zags
2014-12-07	Glendalough	3	Visitor Centre (T 126 969) - Green Rd - Derrybawn Ridge - Remembrance Wood - tracks
2014-12-14	Glendalough	3	Trooperstown CP (T159 969) - Paddock Hill - Scarr edge - Drummin - tracks

Right click on one of the download icons

Choose **Copy link address** or **Copy link / Copy Link Location**

This will have copied the URL of the file you have chosen onto the clipboard.

Now click on the **GPS Visualizer Draw a map** tab

Move the cursor to this box and **Paste** the contents of the clipboard by typing **Ctrl-V**

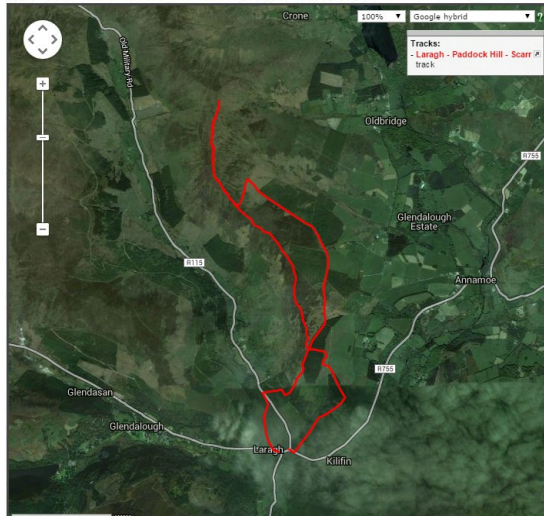
Click on **Draw the map**

This will bring up a screen like the following:

Google Maps output

Your GPS data has been processed. Your Google Map should be displayed below, and it's also temporarily available to [view](#) or [download](#) from GPSVisualizer.com. If something doesn't look like you expected it to, please [contact me](#) and explain the problem. If you want to [save your Google Map](#) to your web site, the HTML source of the map must be modified; the [GPS Visualizer FAQ](#) contains instructions on how to do so.

[SAVE THIS TRIP](#), [add photos](#), & [share with others](#) @ [EveryTrail.com](#)



About this map:
Center of map: 53.03191,-0.2983

[Return to the GPSV map form](#)
(Bookmark this link to save settings)

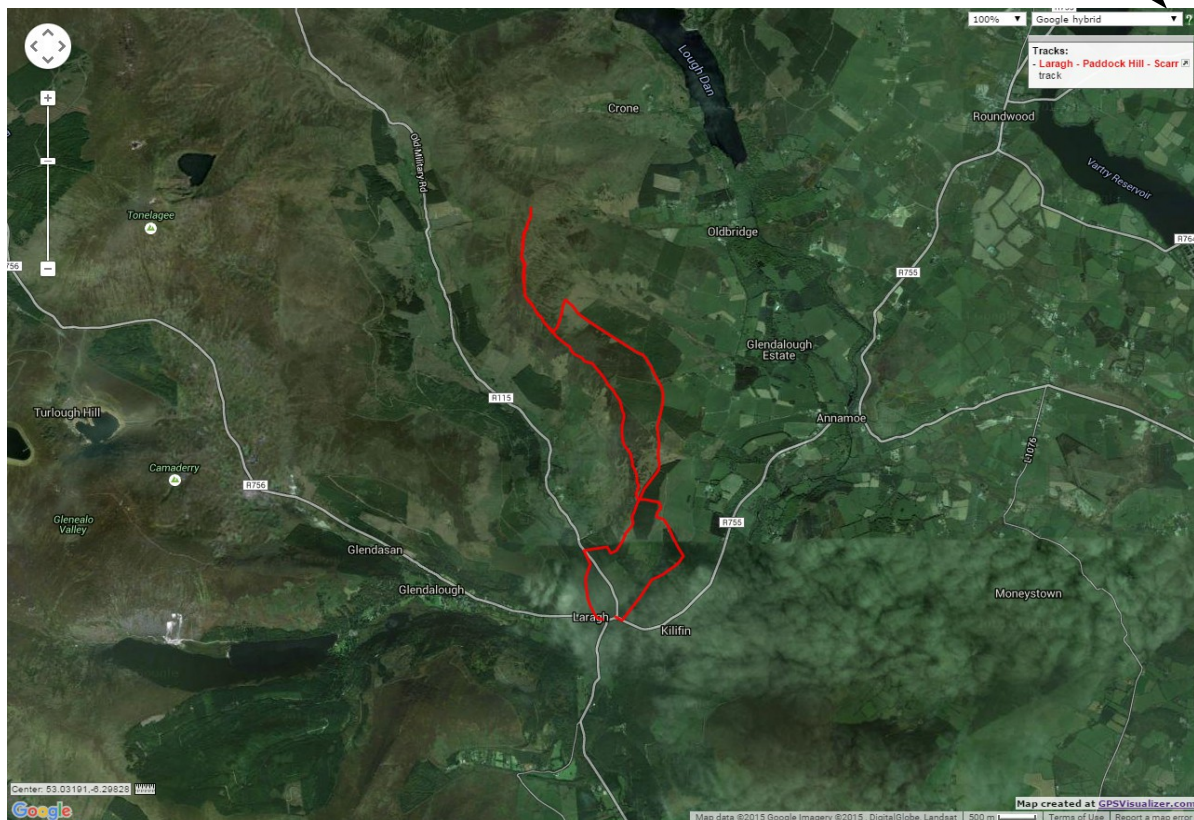
[Donate](#)

Help keep GPS Visualizer free

If you find GPS Visualizer interesting, time-saving, or just plain fun, you can say "thanks" -- and encourage further development -- by clicking the button above and making a contribution via PayPal. Or, check out GPS Visualizer's Amazon.com wish list.

Click on **view** to make the map fill the screen

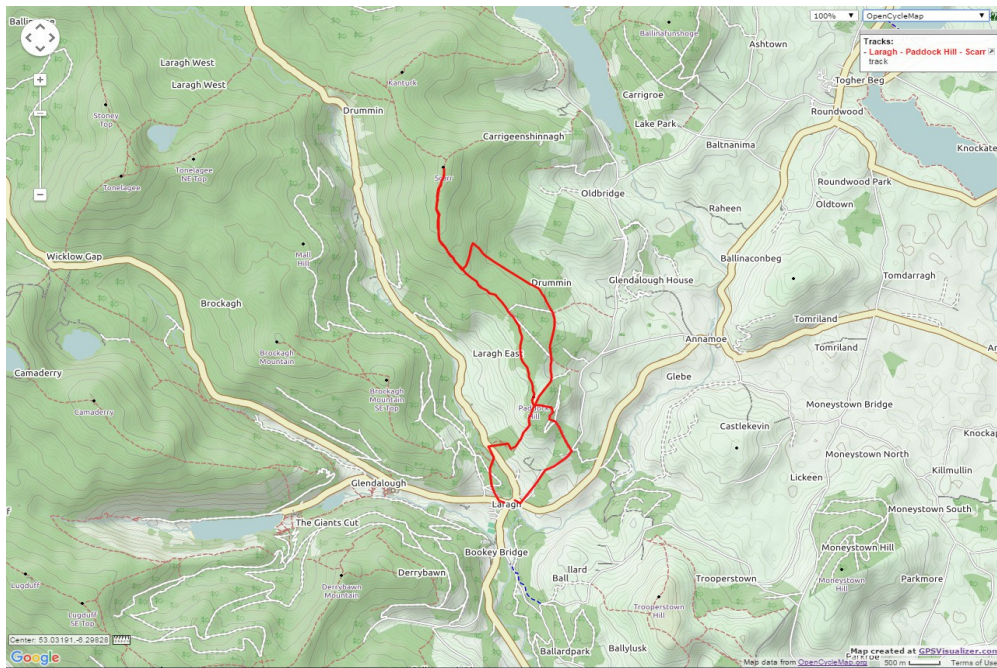
Change the map here



You can zoom in and out using the mouse wheel or the slider bar on the top right of the screen.

By default GPS Visualizer shows the track drawn on a **Google Hybrid** map but this can be changed by using the drop down menu at the top right [arrowed].

OpenCycleMap has the advantage over OpenStreetMap in that it shows some contours.

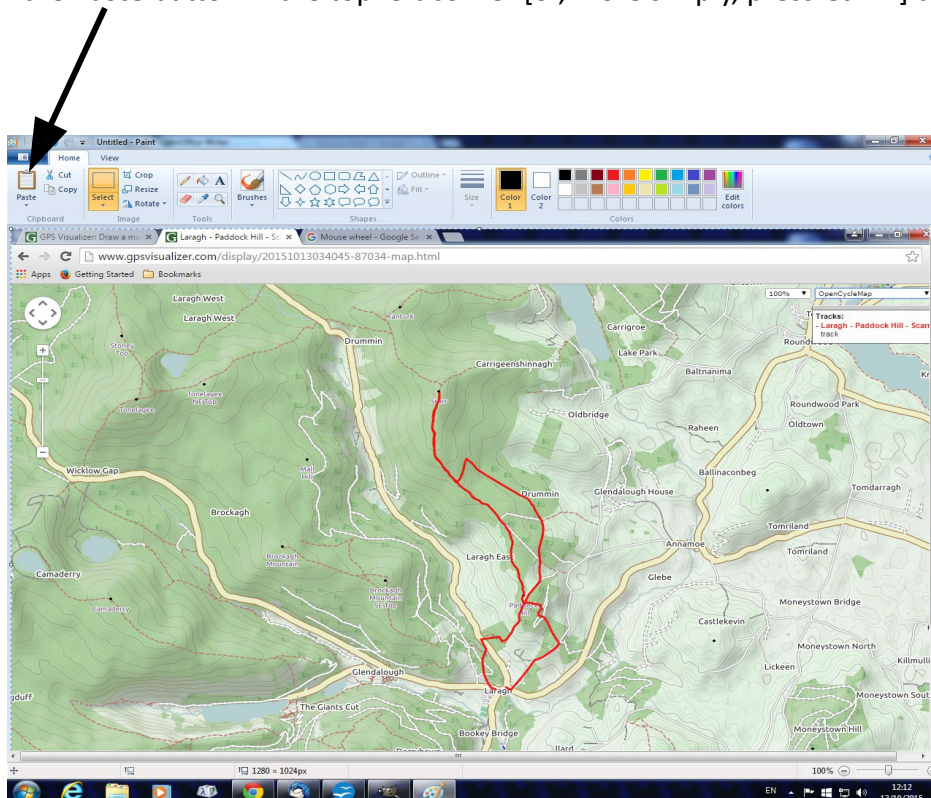


If you want a quick printed copy of this then take the following steps:

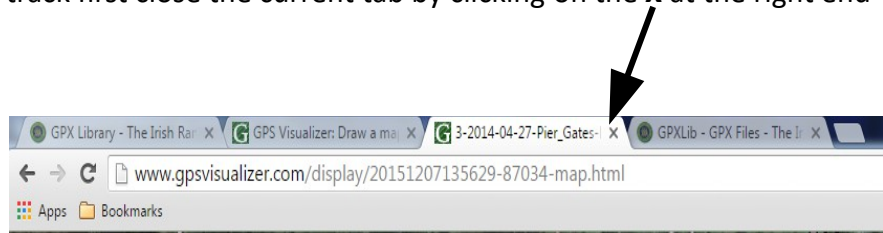
Find and press the **Print Scrn** button on your keyboard – this will copy the screen onto the clipboard.

Go to **Start > All Programs > Accessories > Paint** and open the **Paint** program.

Click on the **Paste** button in the top left corner [or, more simply, press **Ctrl-V**] to give:



Now click on the drop-down menu in the top left corner [arrowed] and select **Print**
To choose and look at another track first close the current tab by clicking on the **x** at the right end



Now repeat the process outlined above. The only difference is that you will need to delete the contents of the box labelled **Or provide the URL of static data on the Web** before pasting in the URL of the track.

If you already have a GPX file saved on your computer you can view it in GPS Visualizer by clicking here and searching for it.

Upload your GPS data files here: ?
(Total size cannot exceed 5 MB; .zip/.gz is supported)

File #1 No file chosen
File #2 No file chosen
File #3 No file chosen

[Show additional file input boxes](#)

Open in new window

Or paste your data here: ?

name,desc,latitude,longitude

Force plain text to be this type:

Or provide the URL of static data on the Web:

Or a URL that the map will load dynamically:

(Google Docs spreadsheets or GPX/KML/XML files only)

Click on **Draw the map** as before.

More information can be found in the section called

Using GPX Visualizer to look at a downloaded track

which you can find on the GPX Library Home Page.